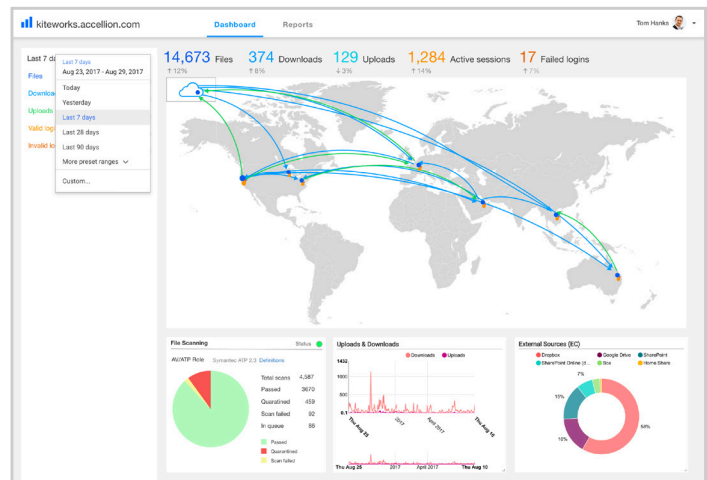


More and more customers are upgrading to Accellion's kiteworks platform to add a critical layer of security and compliance over the people and systems that share sensitive information. Here's why:

- **Compliance:** CISO-focused dashboard and reporting for demonstrating and maintaining compliance
- **User adoption:** Plug-ins providing simple, safe file sharing from wherever employees get work done
- **Extensibility:** Richer workflow automation and integration capabilities
- **Leverage security investments:** Extensive integrations with existing security infrastructure
- **Access:** Superior cloud storage and enterprise content management connectors
- **Deployment:** Distributed, scale-out architecture with flexible on-prem, IaaS and hybrid cloud deployability

### Demonstrate Compliance

kiteworks provides granular, role-based policy controls to ensure all content sharing is done in compliance, supported by comprehensive logging and reporting. A CISO dashboard helps you find anomalies and demonstrate compliance with HIPAA, GDPR, NIST 800-171 and other regulations, and the FedRAMP Authorized option is critical for organizations that work with the U.S. Government. Finally, integration with your Data Loss Prevention (DLP) server detects PII and other sensitive information, and blocks transmission or sharing based on your policies.



### Leverage Ease of Use: Secure, Compliant Plug-ins Everywhere Work Is Done

To drive adoption, secure sharing has to be just a click away in the environments where users do their work, so kiteworks provides a growing set of application plug-ins. And of course, kiteworks has easy-to-use web and mobile applications, with seamless Microsoft Office editing, full content search within documents, and email-based or folder-based collaboration.



### Automate and Integrate Workflows

Accellion's Automation Suite integrates kiteworks with enterprise applications to automate workflows across companies, save costs by centralizing SFTP servers, simplify SFTP for users, and enable mobile workforces. Automation Agents enable code-less automation of file transfers, compatible with existing FTA Automation Agent implementations. For more sophisticated cases, the comprehensive REST API provides access to the full power of kiteworks' content sharing and administrative functionality.

### Safe Sharing Plug-ins

Online Browser	Desktop	Mobile "Places"



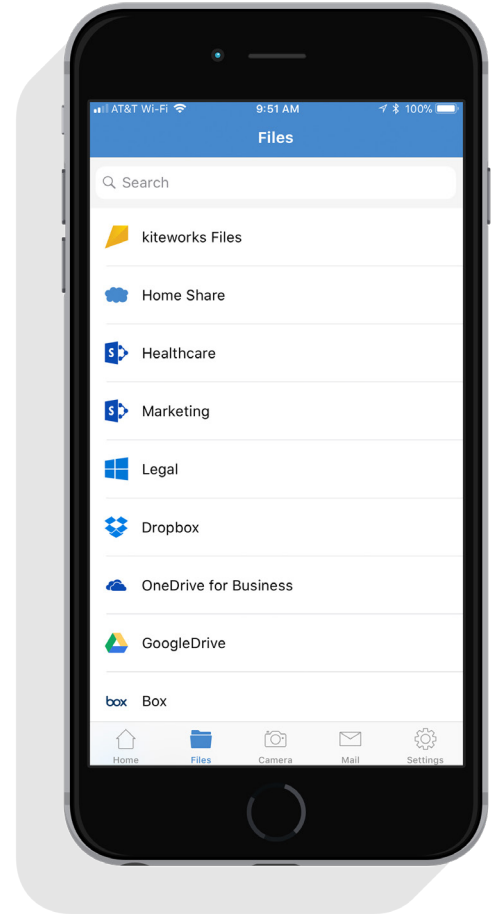
## Protect Your Organization with a Secure Perimeter Around Your Most Sensitive Content

kiteworks meets the most stringent encryption requirements, and only you have access to the keys. It integrates with your multiple authentication mechanisms, your DLP and MDM, and exports to syslog for your SIEM to consume. To ensure you never miss an update or patch, it supports one-click updates of the server, including the embedded OS, database, utilities and application. In addition, kiteworks integrates with your Advanced Threat Prevention (ATP) solution, secures the bodies of emails, and provides a one-time password (OTP) based 2FA for external users when a RADIUS server is not available.

## Gain Superior Access to Content Sources

kiteworks users benefit from feature-rich access to enterprise content management (ECM) systems and CIFS shares, with favorites, on-line viewer and SharePoint/CIFS full text search. Content uploaded and downloaded from these content stores undergo automatic AV, DLP and ATP scans. In addition, native user privileges are honored, and complete auditing and reporting of all file activity is provided.

kiteworks also integrates with cloud storage repositories, adding a layer of security and governance to information entering and leaving your organization through Microsoft OneDrive for Business, Box, Dropbox and Google Drive. And the kiteworks mobile app gives traveling executives and field employees secure, compliant access to content in all these stores.



## Scale Deployment Architecture to Fit Your Evolving Enterprise

The kiteworks virtual appliance is designed with flexible deployment options to handle a constantly-evolving hybrid of on-premise, SaaS and IaaS, newly acquired organizations and managed services.

Customers with entry-level needs simply deploy a single node. When you buy a new option, SFTP for instance, you can enable its service on existing node(s). For more demanding requirements, create distributed, multi-node clusters where each service, such as storage, is enabled only in specific nodes.

## Migration Service

The Accellion Customer Support team's proven methodology consists of planning of the migration, preparing your team and systems, executing the copy, and performing final validation. Purpose-built migration utilities eliminate the risk of data loss, maximize parallelism, and transfer the bulk of the content transparently during the preparation days to minimize downtime during the final cut-over.

### Flexible Deployment Use Case Examples

- Distribute nodes world-wide for low latency
- Protect storage behind firewall / expose web services in DMZ
- Fail-over for High Availability
- Replicate data for disaster recovery
- Scale out for more users
- Control storage locations for data sovereignty requirements
- Hybrid IaaS compute with on-prem storage

**Contact Accellion today to begin your transition to the kiteworks platform.**

Accellion, Inc. enables enterprise organizations to securely connect all their content to the people and systems that are part of their critical business processes, regardless of the applications that create that content or where it is stored, while maintaining the controls and visibility needed to demonstrate compliance. Accellion's solutions have been used by more than 25 million end users and have been installed at more than 3,000 of the world's leading corporations and government agencies including NYC Health + Hospitals; KPMG; Kaiser Permanente; Latham & Watkins; National Park Service; Umpqua Bank; Cargill; and the National Institute for Standards and Technology (NIST). For more information please visit [www.accellion.com](http://www.accellion.com) or call (650) 485-4300. Follow Accellion on LinkedIn, Twitter, and Accellion's Blog.

SO-DS-CN-022018 © Accellion Inc. All rights reserved

Email: [sales@accellion.com](mailto:sales@accellion.com)  
Phone: +1 650 485 4300  
Accellion, Inc.  
1804 Embarcadero Road  
Palo Alto, CA 94303